

6

5

4

3

2

1

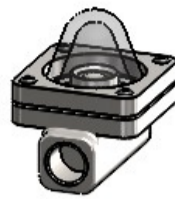
HT335/B CARTRIDGE PULLER B



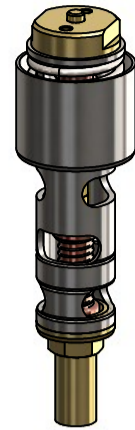
21-1885 ADJUSTING KEY



44-2222 G 1/2 BALL FLOW INDICATOR



71-4654T1 H40 SPOOL ASSEMBLY T1
71-4654T2 H40 SPOOL ASSEMBLY T2
71-4654T3 H40 SPOOL ASSEMBLY T3
71-4654T4 H40 SPOOL ASSEMBLY T4



21-1180 LOCKSHIELD NUT

46-4711A ADJUSTMENT LABEL T1
46-4711B ADJUSTMENT LABEL T2
46-4711C ADJUSTMENT LABEL T3
46-4711D ADJUSTMENT LABEL T4

20-4763 VALVE COVER

COVER SEAL*

20-4762 ADJUSTING SCREW

ADJUSTING SCREW SEAL*

SVS INNER*

SLIDE VALVE SEAL*

40-4764 RETURN SPRING

20-4786 H40/50 ELEMENT PUSH-ROD

PUSH ROD SEAL*

20-4490 SPRING SUPPORT WASHER

ELEMENT ASSEMBLY**

20-4498 SPOOL END-CAP

COUPLING SEAL*

23-7090 DN40 CHECK VALVE HT†

20-4513 NRV HOUSING†

20-4506 COUPLING NUT

41-7119 FLANGE SCREW

SPOOL SUPPORT RING*

20-7094 H40 BYPASS PLATE†

23-7096 DN15 BYPASS CHECK VALVE†

20-7092 H40 KEEPER PLATE†

FLANGE SEAL*

44-2931 THERMOMETER G1/2

70-4896L TRL LOW TEMP
70-4896H TRL HIGH TEMP

70-7103C DN25 CHECK VALVE ASSEMBLY†

ALSO AVAILABLE:

SEALS KIT (CONTAINS ALL PARTS MARKED WITH *) - 5244

SPARES KITS (CONTAINS ALL PARTS MARKED WITH * AND **) -

T1 (15°C - 32°C) SPARES KIT = 5246T1
T2 (32°C - 52°C) SPARES KIT = 5246T2
T3 (45°C - 62°C) SPARES KIT = 5246T3
T4 (58°C - 80°C) SPARES KIT = 5246T4

CONVERSION KIT (FOR CONVERTING DEADLEG VALVE TO RECIRC) -

5620L (T1 & T2 ELEMENTS)
5620H (T3 & T4 ELEMENTS)

NRV UPGRADE KIT (CONTAINS ALL PARTS MARKED WITH †) - 71-7134

ALL DIMENSIONS IN mm. DIMENSIONS ARE APPROXIMATE AND PROVIDED FOR INFORMATION PURPOSES ONLY. DO NOT SCALE.	Description: H40 SPARES DRAWING		 Horne Engineering Ltd. Rankine St, Johnstone, Scotland, PA5 8BD. +44 (0)1505 321455 www.horne.co.uk technical@horne.co.uk
	Product: H40-DLTx & H40-Rx		
	Drawing Number: H40-C	Rev: A	
	Drawn By: CE	Drawn Date: 19/06/25	

6

5

4

3

2

1