

# bimstore.co.uk

Horne Engineering  
Shower Panels  
User Guide

Version 1.0    Revit 2013  
Sept 2014

**HORNE**

## Family Component 'Type Catalogue'

The Horne Engineering Shower Panel ranges are available in a wide range number of options. A type catalogue has been set up to assist the user in selecting only the types they require for their project, meaning the project file size is kept to a minimum. The zip file which you have just downloaded from bimstore will contain two very important files to allow this type catalogue to work correctly, these are:

- the .rfa file (Revit family component)
- the .txt file of the exact same name ( contains the type catalogue information)

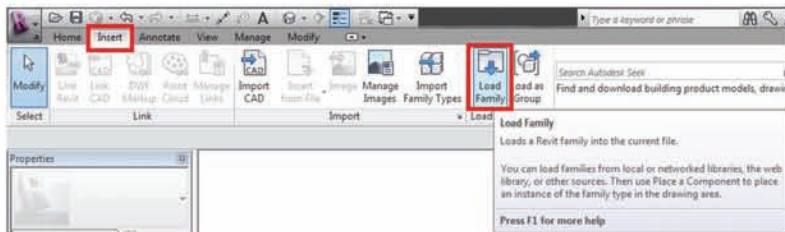
**IMPORTANT** - Please ensure that when saving the downloaded component onto your system that you save both files in the same location.

Please follow the below method to load the component into your project.

## Loading the Shower Panels into your project

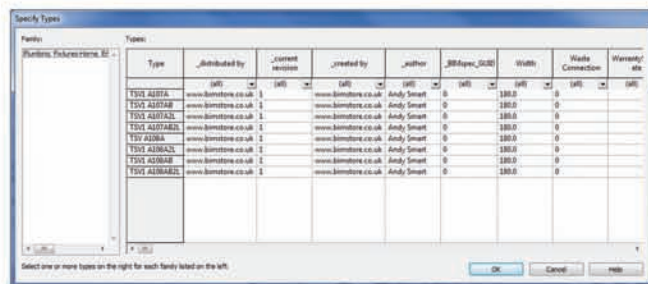
The Horne Engineering Shower Panels are modelled as a 'Mechanical Equipment Family'. You can add the family into your project using the following method:

1. Open the Revit file containing your 'project' and navigate to an appropriate view.
2. Go to the 'Insert' tab on the Revit Ribbon and select 'Load Family'



3. Navigate to the location of the saved Horne Engineering component that you have just downloaded from [www.bimstore.co.uk](http://www.bimstore.co.uk). Note - Please refer to the 'Type Catalogue' section above and ensure that the .txt file is saved in the correct location.

4. The type catalogue selector will now appear ( see image below). Select the desired type/s from the scroll menu, the selected types will turn black once selected. To select multiple types hold Shift or Ctrl.

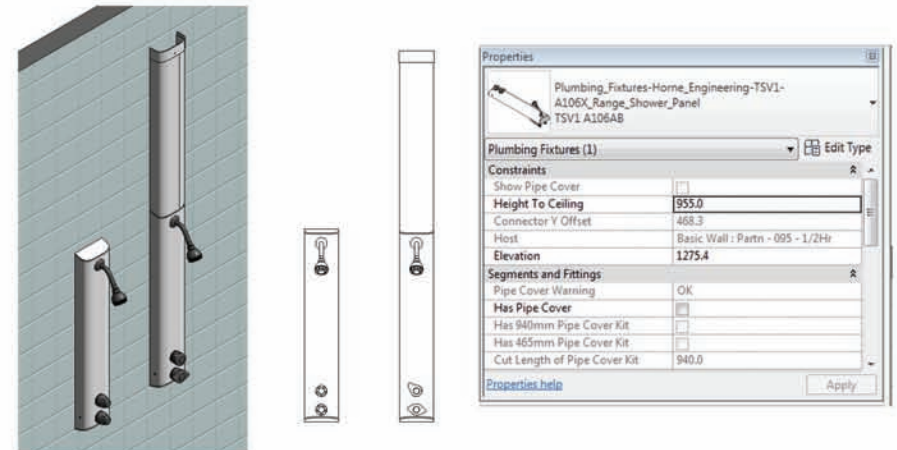


5. Click OK to load these components into your project. The family is now copied and embedded into your project and can be selected from the components button on the main Revit Ribbon.

## Using the Shower Panel Component Additional Features

Horne Engineering offer a range of additional options for their shower panel products and these have been built in to the component to assist the user. In order to access and apply these, please use the following method.

1. Go to a suitable view and select the shower panel.
2. Once the family is selected, the 'Properties' box will appear on the left hand side of the screen. Under the headings 'Constraints' & 'Segments and Fittings' there are a number of parameters that assist with the specification of the shower panel, the main one of these being the options 'Pipe Cover', simply tick the box and click apply.
3. With the pipe cover turned on you are now able to adjust the height of this to suit your requirements by adjusting the dimension parameter 'Height To Ceiling'. This will adjust the height of the pipe cover. To assist the user further and ensure that the pipe cover is available in the size required we have added the parameter 'Pipe Cover Warning'. This parameter will tell the user if the pipe cover size selected is 'OK' or if the cover has been miss-specified and recommends contacting Horne Engineering for further guidance.



## Other Notes

You can add the Horne Engineering shower panel components to your company template file, they will then be available without loading when starting a new project.

## Revisions

Version 1.0 - First Issue

**bimstore.co.uk**

North East  
Spaceworks  
Benton Park Road  
Newcastle Upon Tyne  
NE7 7LX

T: +44 (0)191 223 6600  
F: +44 (0)191 223 6610